

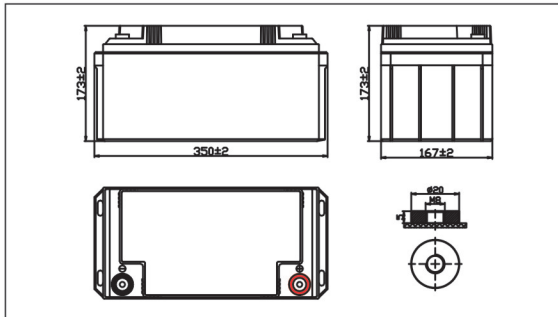
## BL 12-65



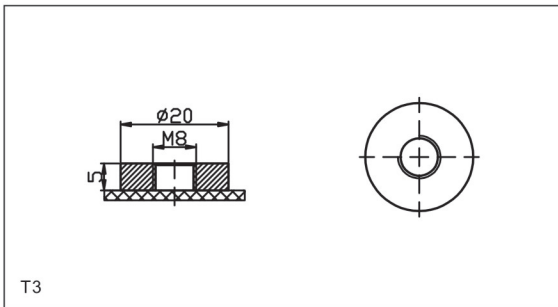
### ► Specifications

Nominal Voltage		12V
Rated capacity (10 hour rate)		65Ah
Dimensions	Length	350± 1.5mm(13.80inch)
	Width	167± 1mm(6.57inch)
	Height	173± 1mm(6.81inch)
	Total Height	173± 1mm(6.81inch)
Approx. Weight		19.2kg(42.33lbs)± 4%

### ► Outer Dimensions (mm)



### ► Terminal Type (mm)



### ► Characteristics

Capacity (25°C)	20HR(10.5V)	68Ah
	10HR(10.5V)	65Ah
	1HR(9.60V)	40.1Ah
Terminal type		T3
Internal resistance (Fully charged, 25°C)		Approx. 7.2m Ω
Capacity affected by temperature (20HR)	40°C	102%
	25°C	100%
	0°C	85%
	-15°C	65%
Self-discharge (25°C)	3 months	Remaining Capacity: 91%
	6 months	Remaining Capacity: 82%
	12 months	Remaining Capacity: 65%
Nominal operating temperature		25°C ± 3°C (77°F ± 5°F)
Operating temperature range	Discharge	-15°C ~ 50°C (5°F ~ 122°F)
	Charge	-10°C ~ 50°C (14°F ~ 122°F)
	Storage	-20°C ~ 50°C (-4°F ~ 122°F)
Float charging voltage (25°C)		13.50 to 13.80V Temperature compensation: -18mV/°C
Cyclic charging voltage (25°C)		14.50 to 15.00V Temperature compensation: -30mV/°C
Maximum charging current		19.5A
Maximum discharge current		650A (5 sec.)
Designed floating life (20°C)		10 years

### ► Construction

Component	Positive plate	Negative plate	Container	Cover	Separator	Electrolyte	Safety valve	Terminal
Raw material	Lead dioxide	Lead	ABS	ABS	AGM	Sulfuric acid	Rubber	Copper

### ► Constant Current Discharge Characteristics Unit: A (25°C, 77°F)

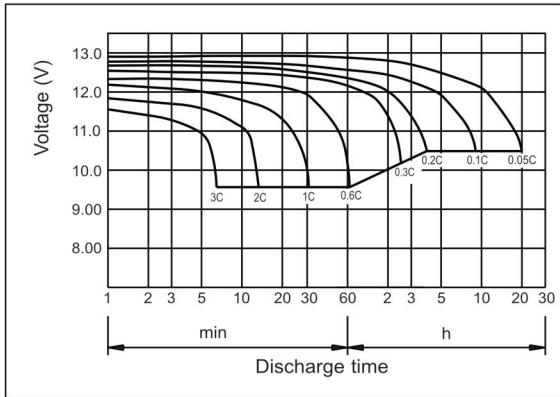
F.V/Time	5min	10min	15min	30min	1HR	2HR	3HR	5HR	8HR	10HR	20HR
9.60V	198.2	140.3	105.8	66.1	40.1	22.8	16.7	11.5	7.6	6.7	3.5
9.90V	192.6	136.5	102.1	65.7	39.4	22.7	16.6	11.4	7.5	6.6	3.5
10.2V	189.7	133.3	99.2	64.4	38.5	22.5	16.5	11.3	7.5	6.6	3.4
10.5V	173.6	125.9	97.1	63.1	37.6	22.3	16.3	11.2	7.8	6.5	3.4
10.8V	157.6	117.7	96.2	61.2	36.5	22.1	16.2	11.1	7.7	6.5	3.3

### ► Constant Power Discharge Characteristics Unit: W (25°C, 77°F)

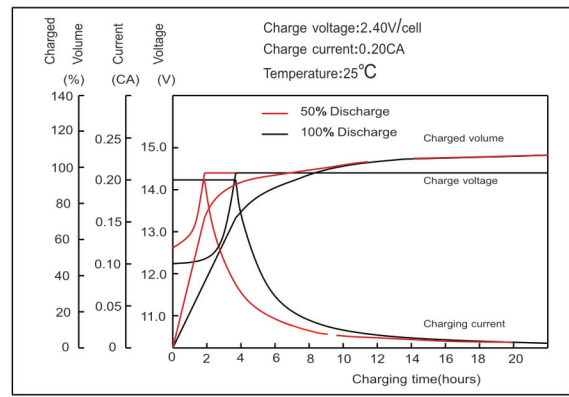
F.V/Time	5min	10min	15min	30min	1HR	2HR	3HR	5HR	8HR	10HR	20HR
9.60V	2139.8	1517.1	1183.4	750.5	457.9	268.5	194.4	138.3	92.1	79.6	41.9
9.90V	2075.6	1465.8	1162.6	734.2	450.3	265.6	192.3	137.2	91.7	79.3	41.7
10.2V	2018.8	1439.9	1141.3	723.4	439.9	263.5	191.4	136.3	89.3	79.0	41.5
10.5V	1879.6	1387.9	1112.3	707.4	428.9	260.5	189.4	135.3	87.8	78.1	41.1
10.8V	1735.1	1321.8	1085.2	687.4	416.9	265.5	186.4	134.3	85.9	77.8	40.9

Note: The above characteristics data can be obtained within three charge or discharge cycles.

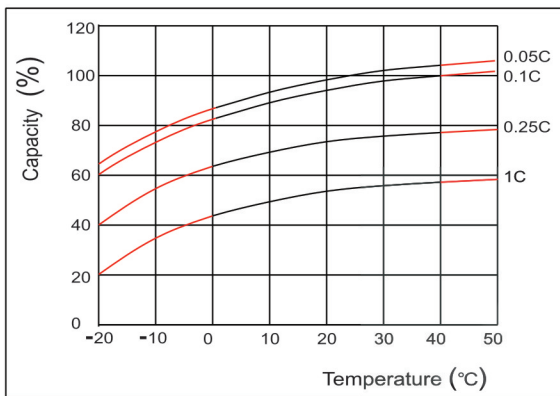
### ► Discharge Characteristics (25°C)



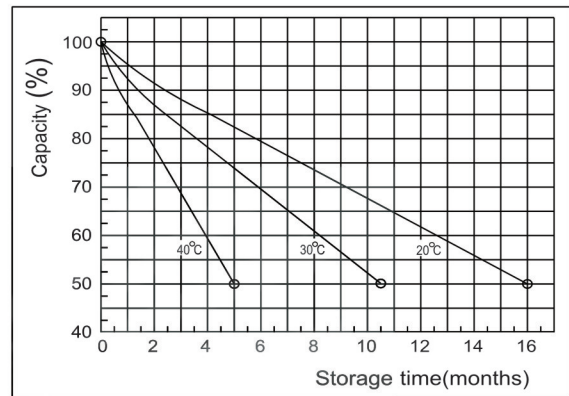
### ► Charging Characteristics (25°C)



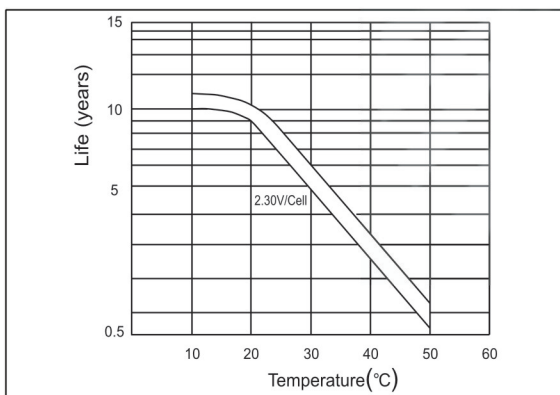
### ► Temperature effects on Capacity



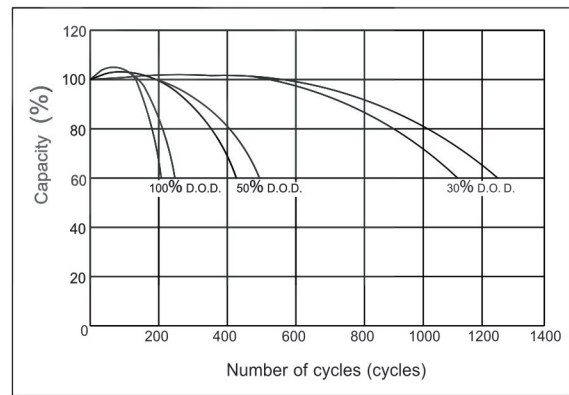
### ► Self-Discharge Characteristics



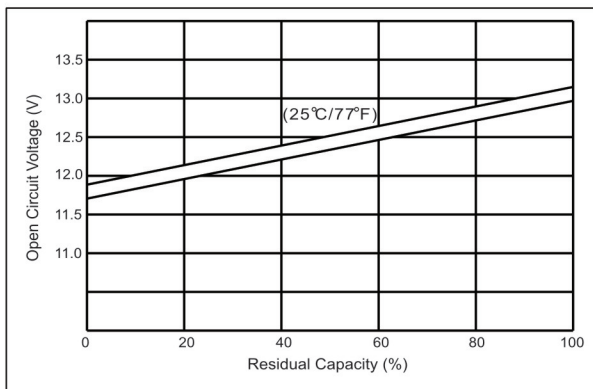
### ► Floating Life on Temperature



### ► Cycle Life on D.O.D (25°C)



### ► The Relationship for OCV and Capacity (25°C)



### ► The Relationship for Charging Voltage and Temperature

