

SLD II MODEL 1-10 KVA ONLINE UPS



SLD II Series Uninterruptible Power Supplies (UPS) are produced with PWM and IGBT technology. SLD II Series uninterruptible power supplies, which provide high reliability with microprocessor control, provide power factor and energy efficiency, provide more power with full sine wave output and high output power factor, are user-friendly, 1-phase input - 1-phase output double conversion online uninterruptible power supply with its high quality, unique design and size, easy-to-understand large LCD screen with operation diagram showing all values.

*Product images may vary according to power values.

FEATURES AND VALUES



Advanced Battery Management



Power with PFC Factor Correction



Energy saving with High Efficiency

You can access the product page by scanning the QR Code with your phone.



- Clear LCD display and LED indicator showing Input / Output / Load / Battery / Frequency status
- Advanced battery management (ABM)
- Compact, lightweight, silent EMI/RaFI
- DSP Controlled Online UPS
- OnLine UPS with true sine wave output
- Double conversion
- N+1 redundant parallel function (6-10 KVA)
- Maximum security with CPU Control
- PFC function (Power Factor Correction)
- Static Bypass feature
- Cold Start (Battery operation feature)

- 2 Years full Warranty
- CE, ISO 9001 certified
- 10 Year Spare Parts Warranty
- Communication via RS-232 port,
- Power factor correction at the input
- Overload and short circuit protection
- Automatic self-test feature
- Energy saving with high efficiency
- SNMP support optional
- Fan speed changing according to the load (Smart fan)
- Ability to Connect Additional Battery (optional)
- Free UPS management software (Shutdown and reboot)

MODEL	SLD II			SLD II			SLD II		
Strength	1 kVA / 900 W			2 kVA / 1800 W			3 kVA / 2700 W		
Input									
Rated Voltage	208 / 220 / 230 / 240 Vac								
Voltage Range	110 ~ 176 Vac (linear derating between 50% and 100% load); 176 ~ 280 Vac (no derating); 280 ~ 300 Vac (derating 50%)								
Frequency	40 ~ 70 Hz (auto-sensing)								
Power factor	≥ 0.99								
Bypass voltage range	- 25% ~ +15% (settable)								
Total harmonic distortion (THDi)	≤ 6%								
Output									
Voltage	208 / 220 / 230 / 240 Vac (settable via LCD)								
Voltage Regulation	± 1%								
Frequency	45 ~ 55 Hz or 55 ~ 65 Hz (synchronized range); 50 / 60 Hz ± 0.1 Hz (battery mode)								
Waveform	Sinusoidal								
Power factor	0.9								
Total harmonic distortion (THDv)	≤ 2% (linear load), ≤ 5% (non-linear load)								
Crest factor	3:1								
Overload	105% ~ 125% for 1 min, 125% ~ 150% for 30 s, > 150% for 300 ms								
BATTERY									
DC voltage	24 V (S)	36 V (S)	36 V (H)	48 V (S)	72 V (S)	72 V (H)	72 V (S)	96 V (S)	96 V (H)
internal battery	2 × 9 Ah	3 × 7 Ah	/	4 × 9 Ah	6 × 7 Ah	/	6 × 9 Ah	8 × 7 Ah	/
Charging current (max.)	1 A		6 A	1 A		6 A	1 A		6 A
Recharge time	Standard model: 90% capacity restored in 3 hours; Long time model: depend on the capacity of battery								
SYSTEM									
Yield	≥ 90% (Mains mode)			≥ 91% (Mains mode)			≥ 92% (Mains mode)		
	≥ 85% (Battery mode)			≥ 86% (Battery mode)			≥ 87% (Battery mode)		
	≥ 95% (ECO mode)			≥ 96% (ECO mode)			≥ 97% (ECO mode)		
Transfer time	Mains mode to battery mode: 0 ms Inverter mode to bypass mode: 4 ms (typical)								
Protections	Short-circuit, overload, overtemperature, battery discharge protection and fan testing protection								
Communications	RS232 (standard), USB / RS485 / dry contacts / SNMP (optional)								
Image	LCD + LED								
Standards	EN 62040-1, EN 62040-2, EN 61000-3-2, EN 61000-3-3, IEC 61000-4-2, IEC 61000-4-3, IEC 61000-4-4, IEC 61000-4-5, IEC 61000-4-6, IEC 61000-4-8, IEC 61000-4-11, IEC 61000-2-2, IEC 62040-2, IEC 62040-1, IEC 62040-3								
OTHER									
Operating temperature	0°C ~ 40°C								
Storage temperature	-25°C ~ 55°C (without batteries)								
Relative humidity	0 ~ 95% (non-condensing)								
Altitude	≤ 1000 m, derating 1% for each additional 100 m								
IP rating	IP 20								
Noise Level (at 1m)	≤ 50 dB								
Boyt (W × D × H) (mm)	144 × 312 × 216	144 × 317 × 216	144 × 336 × 216	144 × 417 × 216	191 × 419 × 335	191 × 418 × 335	191 × 419 × 335		191 × 418 × 335
Net Weight(kg)	11	12.8	6	16.4	23.1	10.5	24.3	29.4	11
Gross Weight (kg)	11.3	14	7	17.8	24.7	12	25.9	31.1	12.5
Packaged Dimensions (W×D×H) (mm)	230 × 402 × 315	230 × 460 × 315	232 × 417 × 318	230 × 506 × 315	277 × 500 × 435	318 × 533 × 471	277 × 500 × 435		277 × 500 × 435

MODEL	SLD 11	SLD 11
Strength	6kVA / 6000W	10kVA/10000W
Input		
Input wiring	Single-phasethree-wire (1Φ + N + PE)	
Rated Retardation	208/ 220 / 230 / 240 Vac	
voltage range	110 ~ 176 Vac (linear derating between 50% and 100% load); 176 ~ 288 Vac (no derating)	
proportional frequency	50 / 60 Hz (auto-sensing)	
Frequency range	40~ 70 Hz	
Power factor	≥0.99	
Bypass voltage range	-40% ~ +15% (settable)	
Total harmonic distortion (THDi)	≤5%	
Output		
Output wiring	Single-phasethree-wire (1Φ + N + PE)	
rated voltage	208(PF=0.9) / 220 / 230 / 240 Vac	
voltage regulation	± 1%	
Frequency	Synchronized to bypass in mains mode; 50 / 60 Hz ± 0.1% Hz in battery mode	
Waveform	Sinusoidal	
Power factor	1	
Total harmonic distortion (THDv)	≤ 1% (linear load); ≤4% (non-linear load)	
Crest factor	3:1	
Overload	105% ~ 110% for 10 min, 110% ~ 125% for 1 min, 126% ~ 150% for 30 s	
BATTERIES		
DC voltage	192Vdc (192 ~ 240 Vdc settable)	
Number of Batteries	16pcs (16 ~ 20 settable)	
Internal Battery (standard model)	12 V/ 7 Ah x 16	12 V/ 9 Ah x 16
Charging current	Standard model: 1 A; Long time model: 5 A (default), 1~ 5 A settable; 12 A (optional)	
Recharge Time	Standard model: 90% capacity restored in 8 hours; Long time model: depend on the capacity of battery	
SYSTEM		
Yield	≥ 94% at 100% load, max. 95% at 60% load, ≥ 98% in ECO mode	
Transfer time	0ms	
Protections	Short-circuit, overload, overtemperature, battery low voltage, overvoltage, undervoltage and fan failure	
Max. number of parallel connections	4	
Communication	RS232(standard), USB / RS485 / dry contacts / SNMP / battery temperature compensation (optional)	
Image	LCD+ LED	
OTHER		
Operating temperature	0°C ~ 40°C	
Storage temperature	-25°C ~ 55°C (without battery)	
Relative humidity	0 ~ 95% (non-condensing)	
Altitude	≤1000 m, derating 1% for each additional 100 m	
IP rating	IP20	
Noise (at 1 m)	≤ 55 dB	≤58 dB
Boyt (W × D × H) (mm)	191 × 465 × 711 (S), 191 × 465 × 350 (H)	191 × 495 × 711 (S), 191 × 495 × 350 (H)
Packed Size (W×D×H) (mm)	310 × 654 × 941 (S), 318 × 595 × 475 (H)	310 × 685 × 941 (S), 318 × 617 × 475 (H)
Net Weight (kg)	53(S), 14.5 (H)	62(S), 16.5 (H)
Gross Weight (kg)	61(S), 16 (H)	70(S), 18 (H)

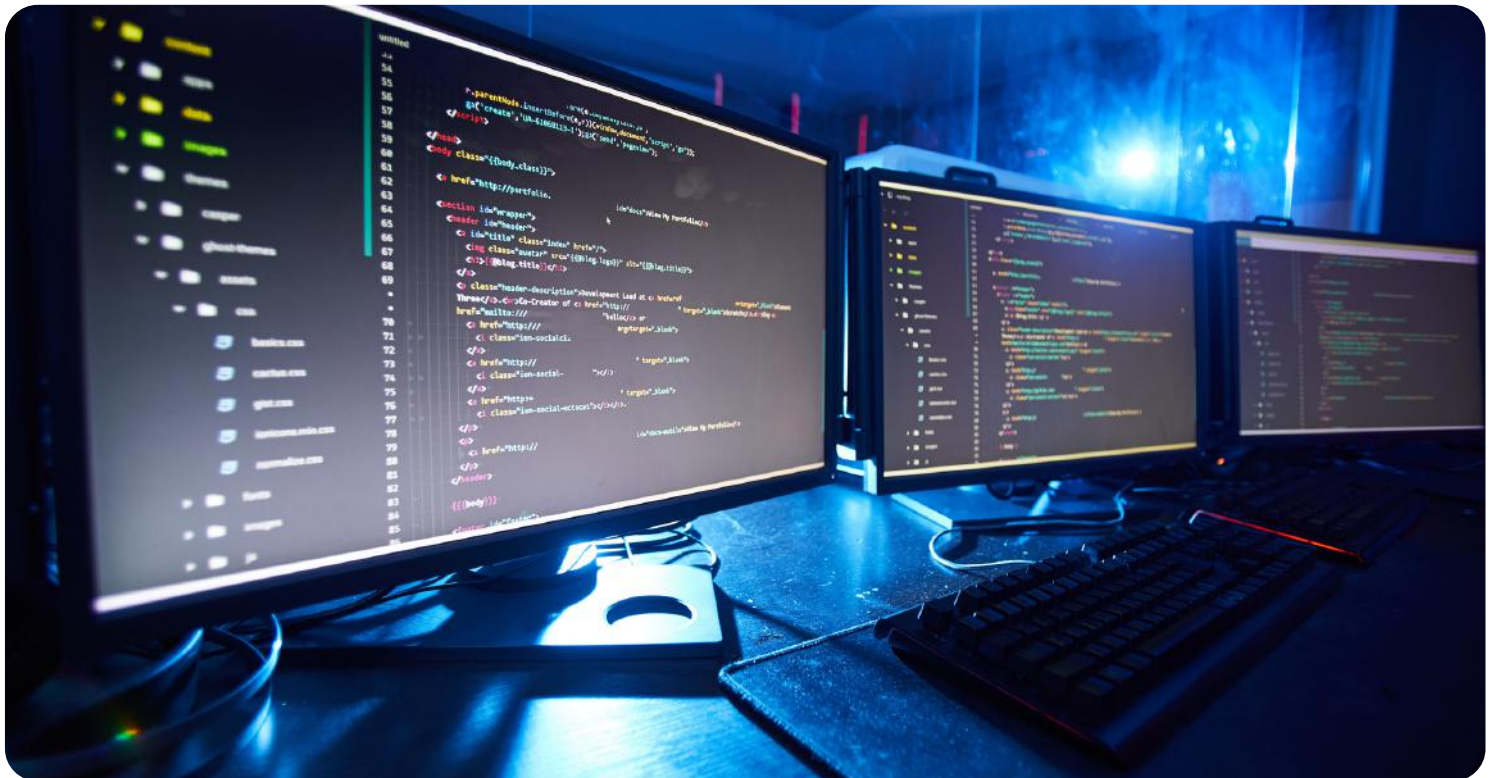


X-ray

Ultrason

Network
Systems

Digital printing



Offices

Computers

Security systems

Medical Devices